

# Selecting an SAE Project Type (AET Experience) *AETlearn*

**Purpose:** This guide provides a decision tree framework for an SAE project, which in The AET is called an AET experience. This guide can also serve as a classroom exercise to begin discussing SAEs. Also, review [www.exploresae.com](http://www.exploresae.com) for additional SAE resources.

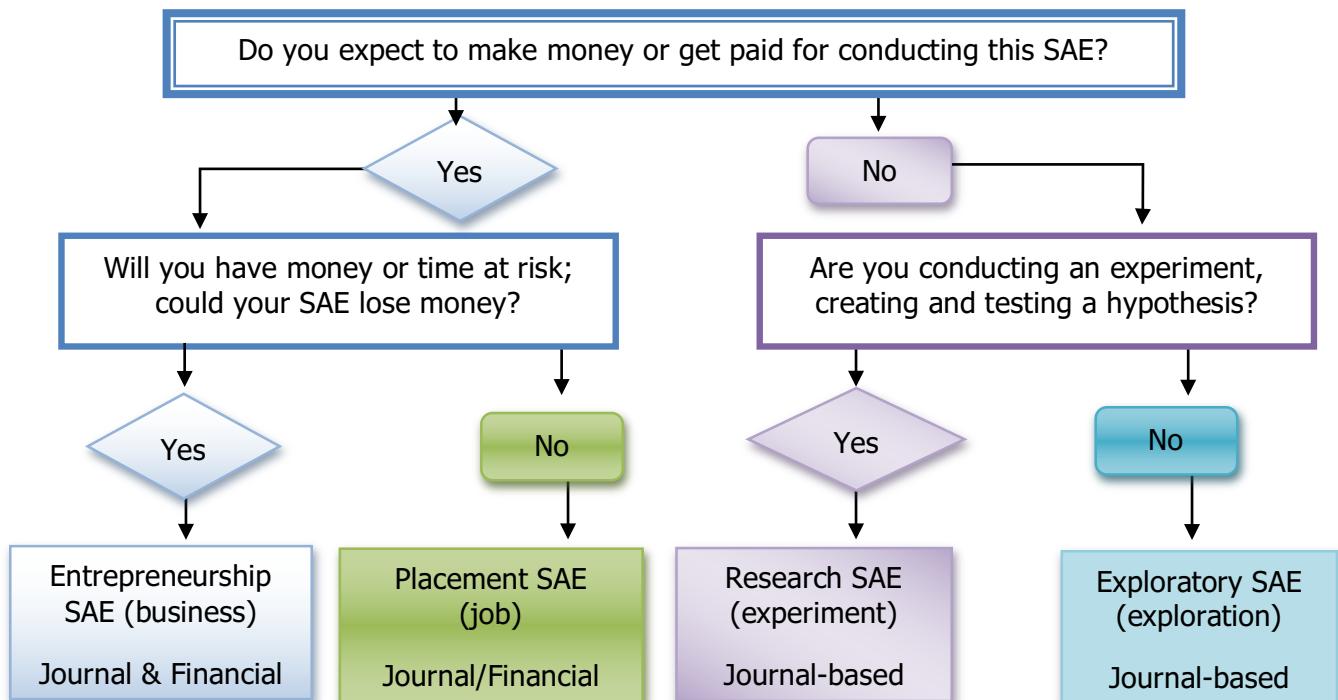
**Student Name:** \_\_\_\_\_ **Date:** \_\_\_\_\_

## STEP 1: Describe the Primary Audience, Focus, or Level for your Project

- **Independent** - Most traditional projects are Independent. You are responsible for management decisions with supervision and support from others. You bear any financial risk, and/or receive financial reward.
- **School Based** - These projects are conducted with formal cooperation or the school. This is sometimes referred to as a "school-based enterprise". Typically, school resources are required, and the school assumes the majority of any financial risk in the project, while you may be rewarded for assisting in management decisions, promotion, implementation, and evaluation of the project.
- **Community/Event** - These projects are conducted with the formal cooperation of community organizations, often those responsible for a community-based event. These organizations assume any financial risk in the project. These are sometimes referred to as a service learning projects, and may involve students in conducting needs assessment, planning goals and event objectives, promotion, implementation, and evaluation of the activity.

## STEP 2: Discover Your Most-Appropriate SAE Type

*Decision Tree: Beginning at the top, answer the questions and it will guide you to your most-appropriate SAE type. Complete this exercise for each SAE idea – repeat to explore more!*



# Selecting an SAE Project Type (AET Experience)

## Time to Brainstorm: My SAE idea

In the space below, write the SAE type selected from the decision tree exercise. Describe your SAE idea.

## Step 2. SAE setup in The AET (More help is online for each section ?)

(Follow the steps below; check them off as you go!)







1. Click PROFILE, select "Experience Manager" in the Profile section of The AET.
2. Select "Add New" at the top of the page

<b>Name:</b> ?	<input type="text"/>	Enter a short descriptive name for this experience.
<b>Level / Focus:</b> ?	Individual <input type="button" value="v"/>	?
<b>SAE Type:</b> ?	Exploration: <input type="radio"/> Exploratory	? Journal Only
	Agriscience: <input type="radio"/> Research/Experimental	? Journal and Finances
	Job: <input type="radio"/> Paid Placement <input type="radio"/> Unpaid Placement	? Paychecks and Journal
	Business: <input type="radio"/> Entrepreneurship/Ownership	? Journal and Finances
<b>Primary Experience Category:</b> ?	(Please Choose) <input type="button" value="v"/>	
<b>Primary Subcategory:</b> ?	<input type="button" value="v"/>	

3. The following table illustrates your options:
  - ✓ Your projects name: \_\_\_\_\_
  - ✓ The Level of your project: \_\_\_ Individual \_\_\_ School based \_\_\_ Community/Event based
  - ✓ Your type of SAE: \_\_\_\_\_
  - ✓ Your experience category (Select one)
    - \_\_\_ Cluster Skills (CS) leadership, personal growth and career success skills
    - \_\_\_ Animal Systems (AS) focused on animal systems
    - \_\_\_ Agribusiness Systems (ABS) focused on agribusiness projects
    - \_\_\_ Biotechnology Systems (BS) focused on science projects
    - \_\_\_ Environmental Service Systems (ESS) waste management and environment
    - \_\_\_ Food Products and Processing Systems (FPP) focused on food science/service
    - \_\_\_ Natural Resource Systems (NRS) soil, water, and other natural resources
    - \_\_\_ Plant Systems (PS) focused plant systems
    - \_\_\_ Power, Structural and Technical Systems (PST) focused on power systems

# Selecting an SAE Project Type (AET Experience)

## Step 3. Manage the project's general information.

1. The "SAE plan" option  is to develop an SAE Plan (see related guides).
2. The "SAE budget" option  is an additional planning document for entrepreneurship projects.
3. The "edit" option  is to change any of your setup information
4. A green icon  signifies no information is needed, but turns "red"  once you begin your records and needs an annual description of your project.
5. The "on/off" button  is to select "off" once the project is complete.



To provide some work offline, use the following area to develop a beginning year SAE description. A good description of your SAE idea would include a summary of your idea, responsibilities and skills obtained. Using the annual review in The AET, you can alter each year to show growth.

Develop a written SAE project description (Brainstorm some ideas to later enter into AET):

---

*\* Refer to managing SAE guides and developing an SAE Plan for more information.*